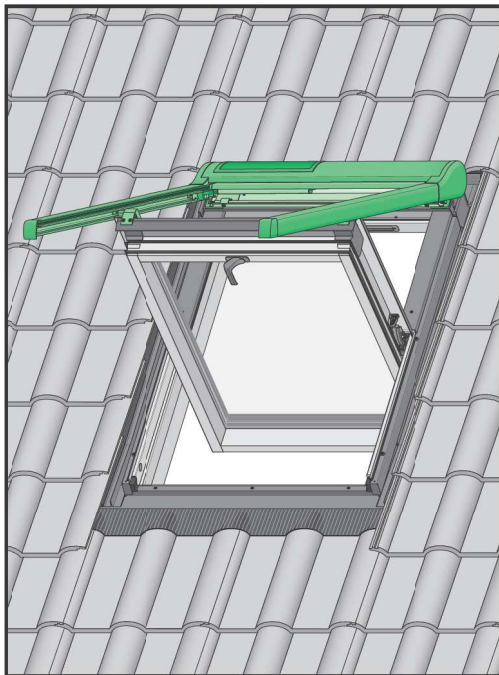
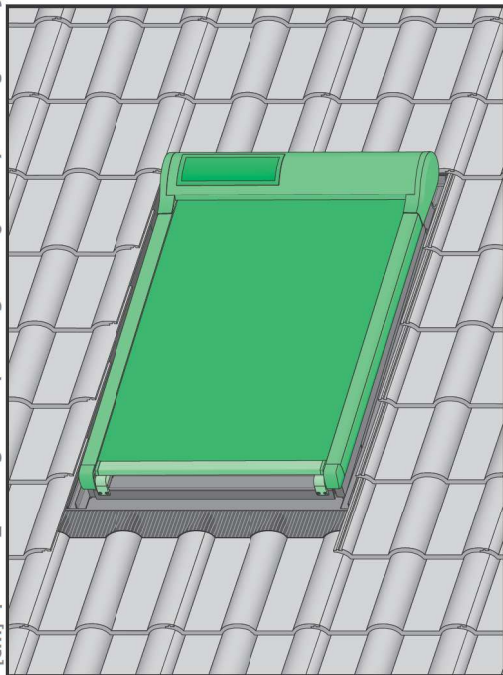
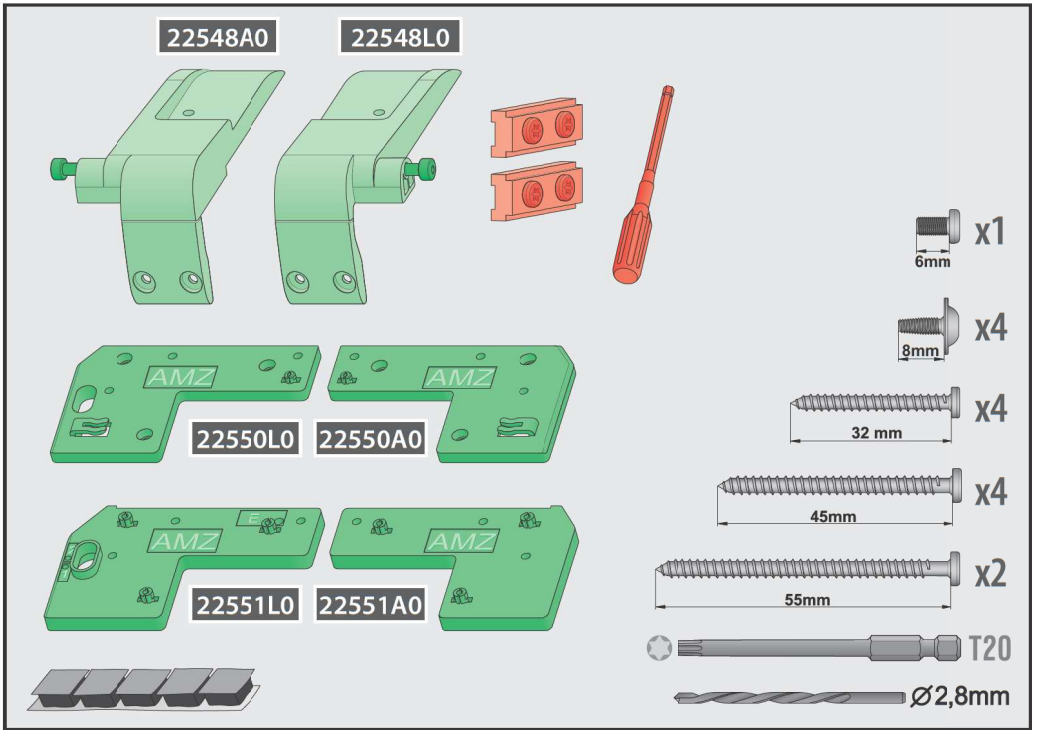
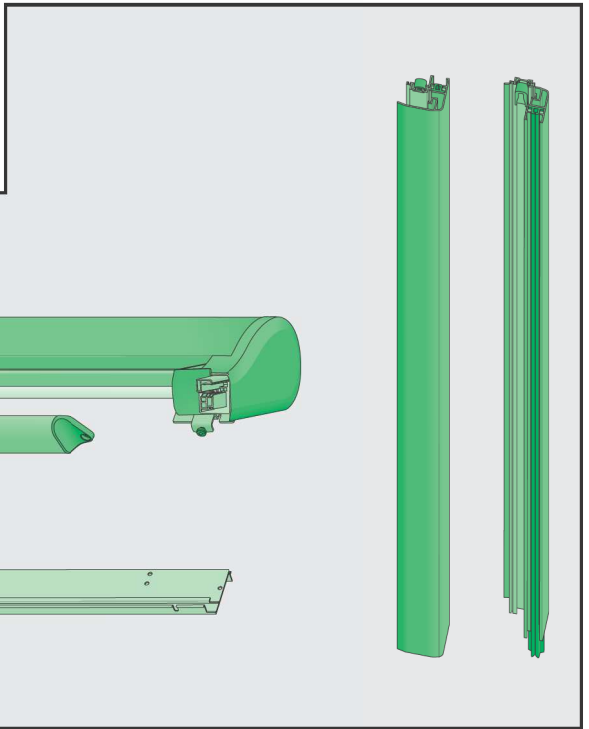
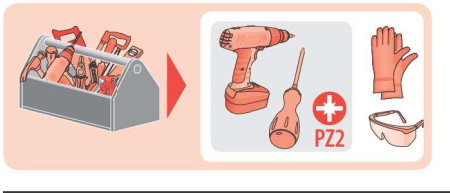


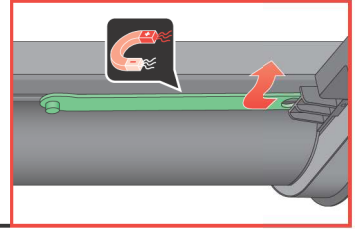


AMZ Z-Wave Solar (2023)

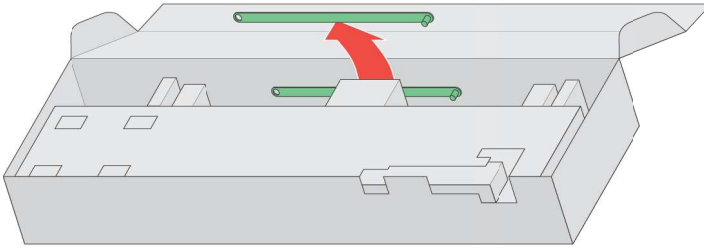




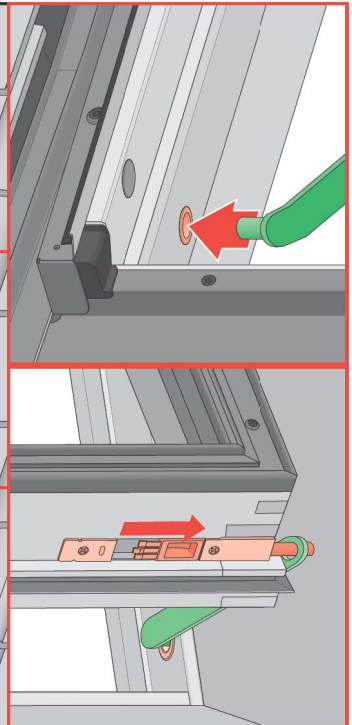
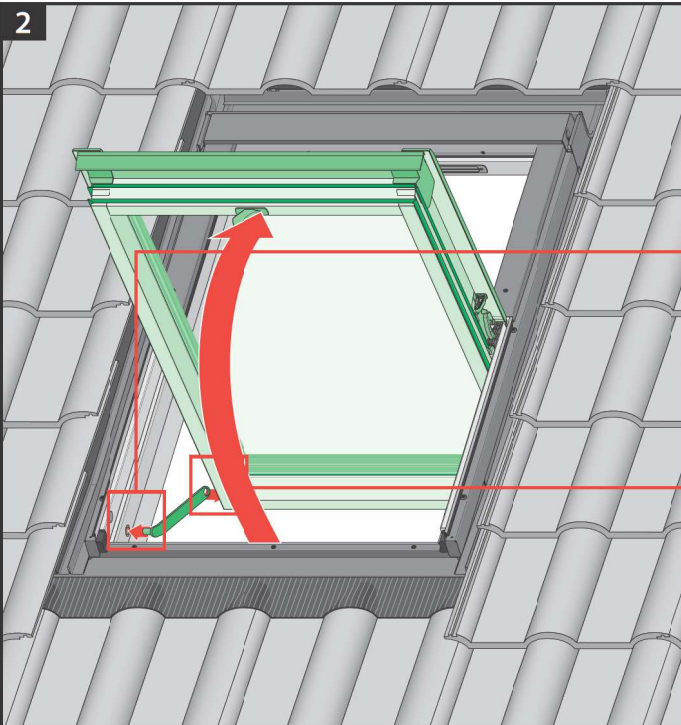
1 FTP-V, FTU-V, FTW-V, FPP-V, FTS, FTS-V, FTT, PTP-V, PPP-V, PTP

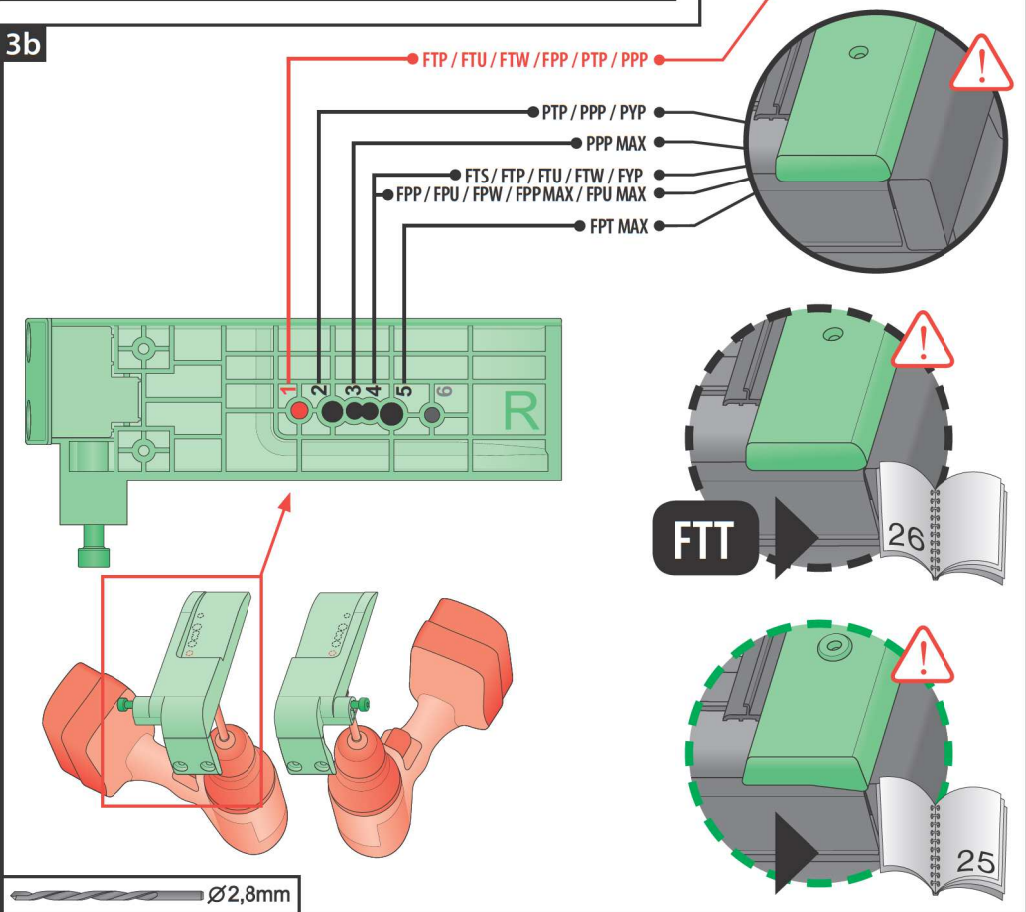
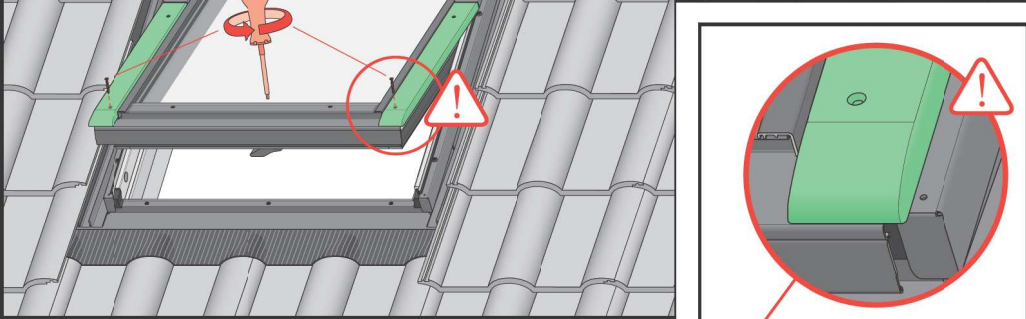
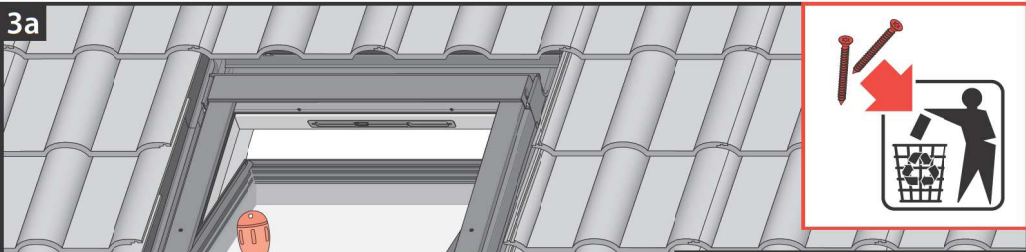


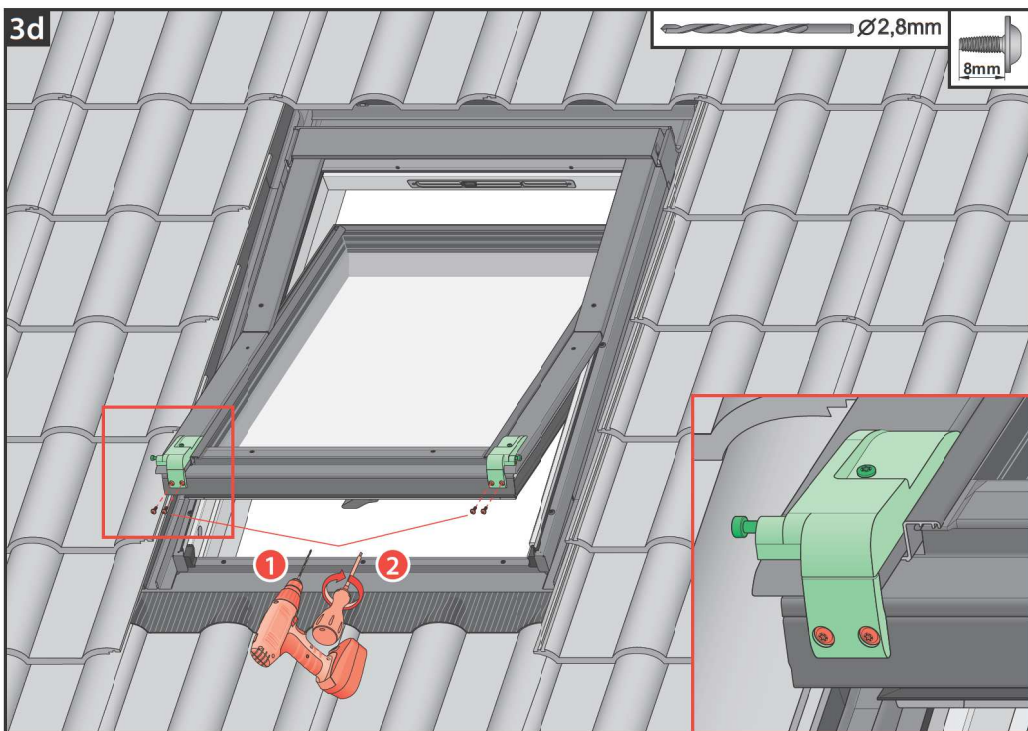
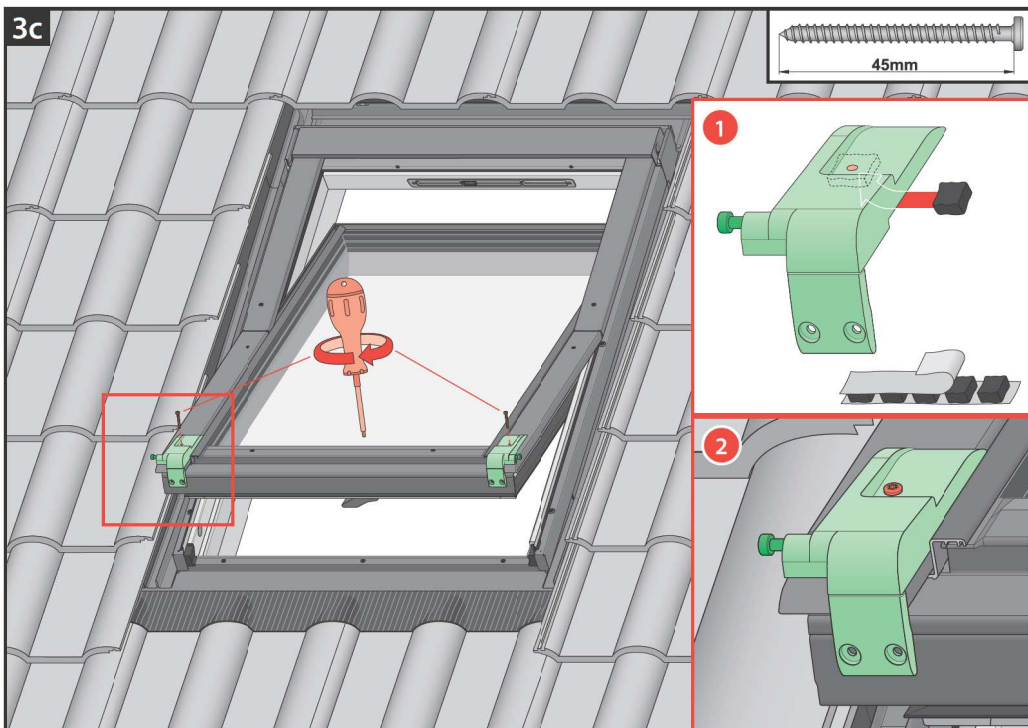
1* FYP-V, FDY-V, PYP-V

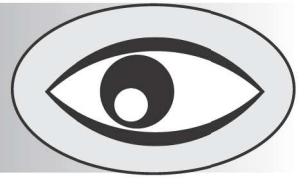


2





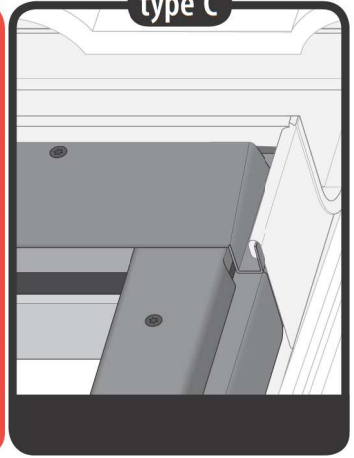
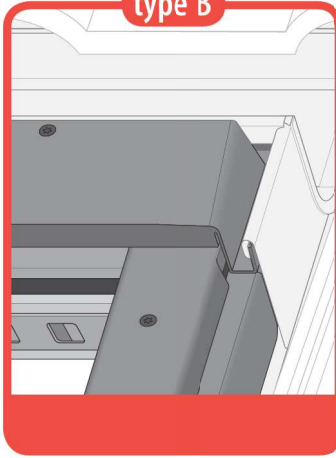
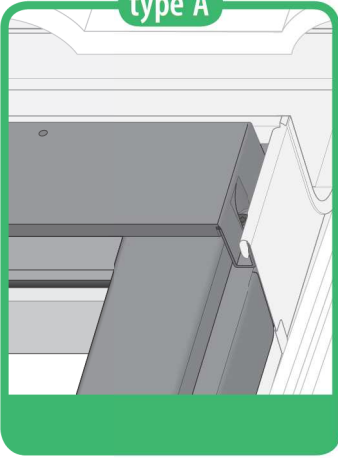




type A

type B

type C

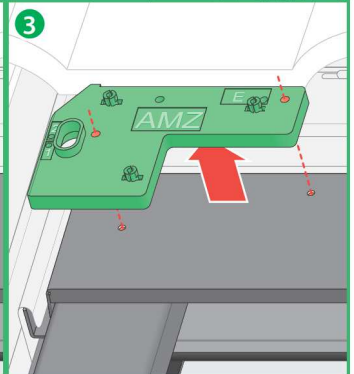
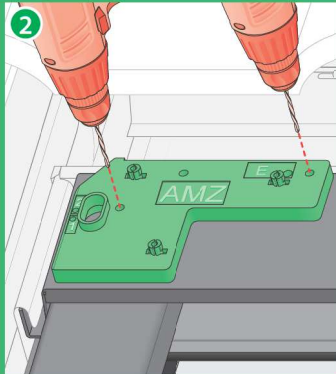
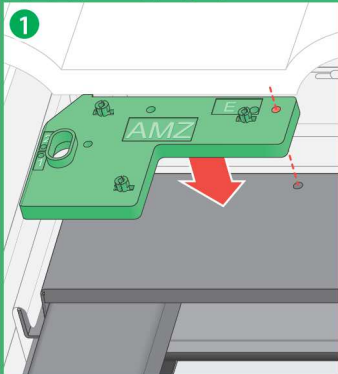
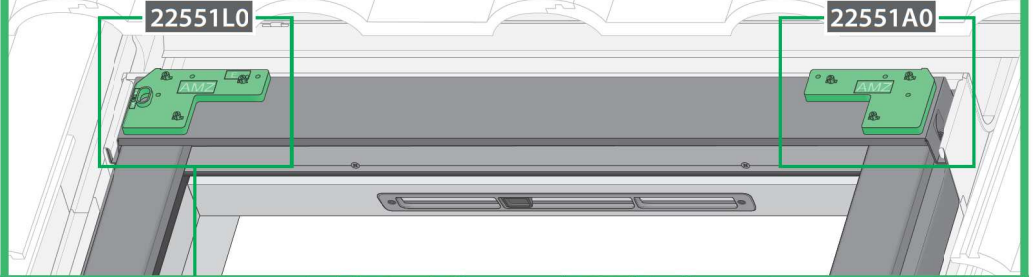


4a type A

Ø2,8mm

22551L0

22551A0

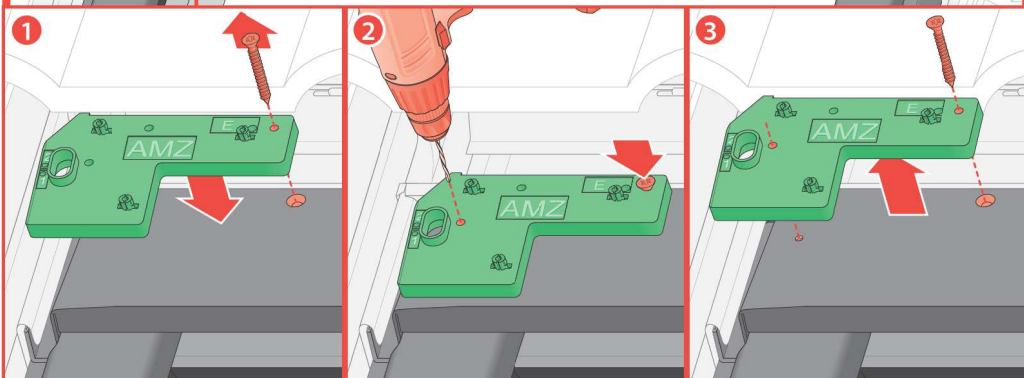


4b type B

Ø2,8mm

22551L0

22551A0

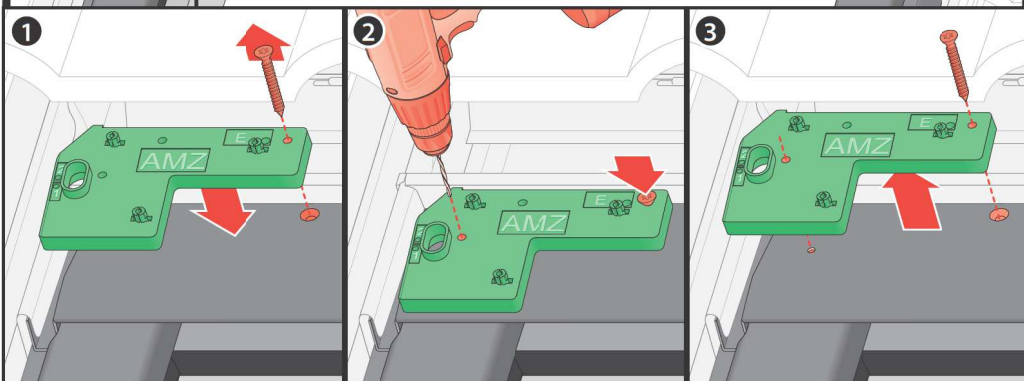


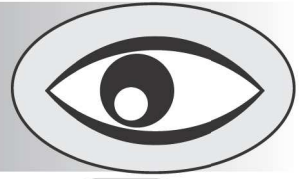
4c type C

Ø2,8mm

22551L0

22551A0

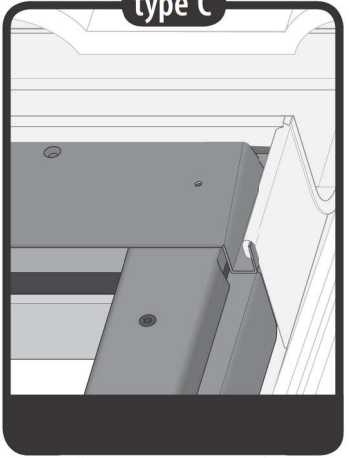
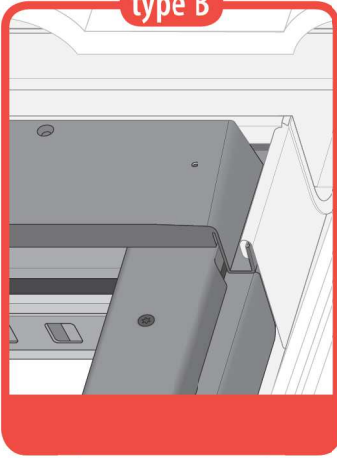
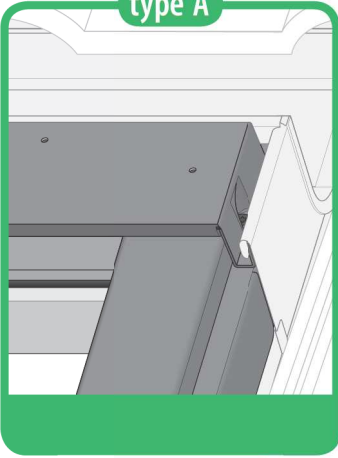




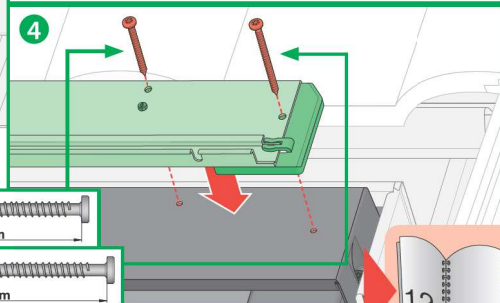
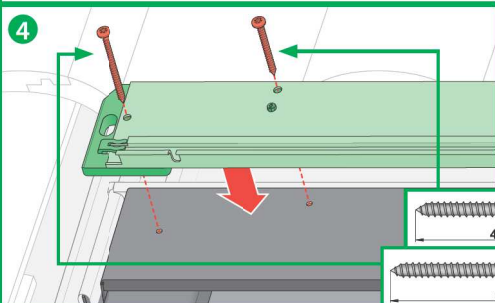
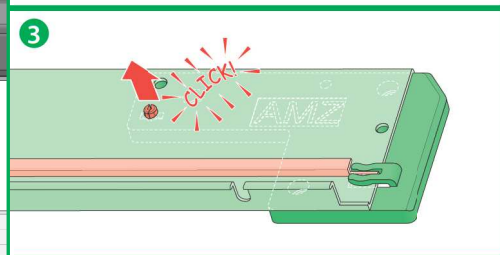
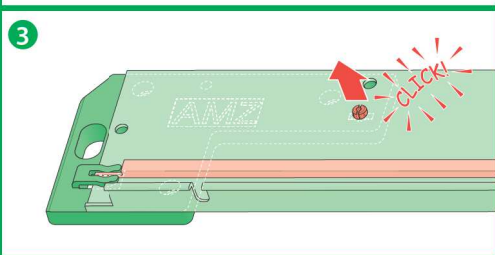
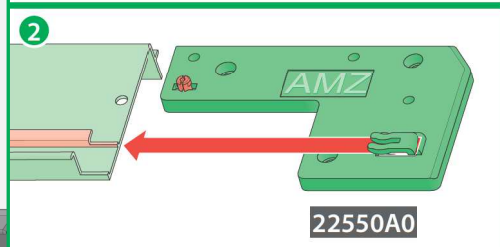
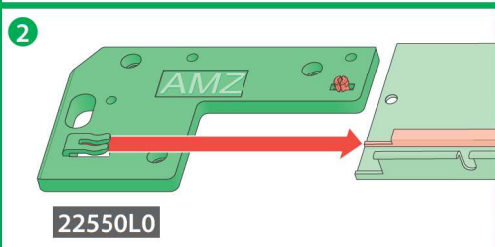
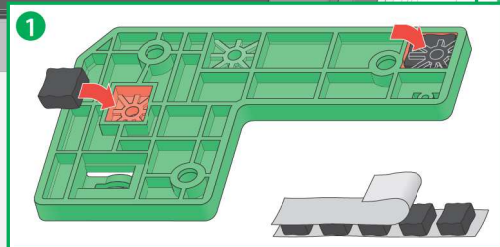
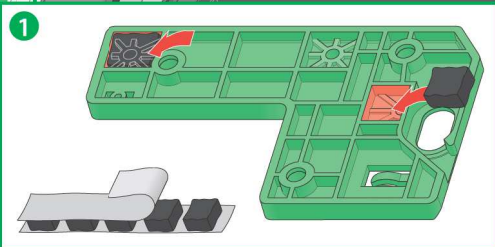
type A

type B

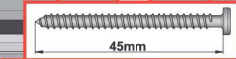
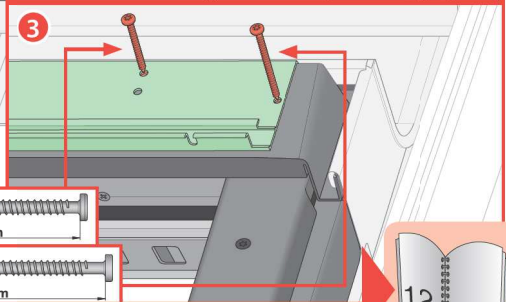
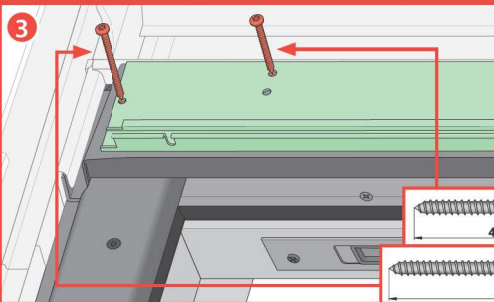
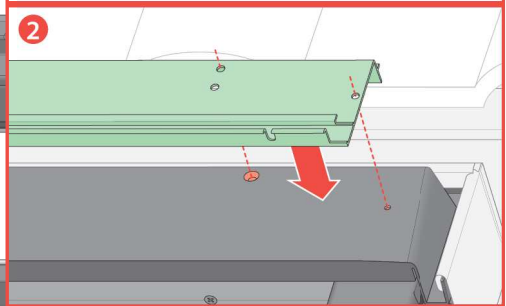
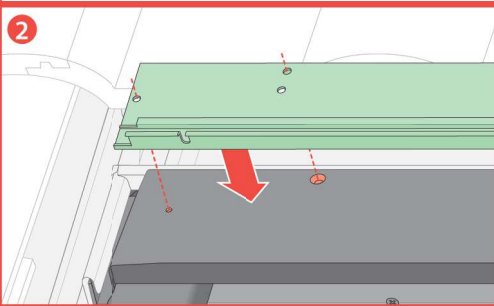
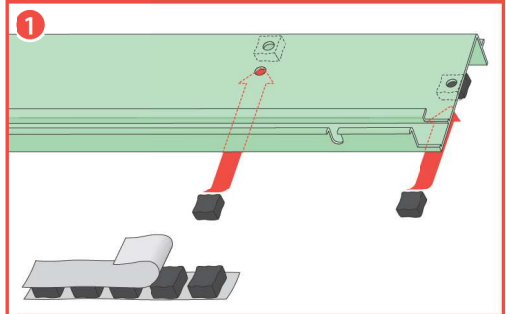
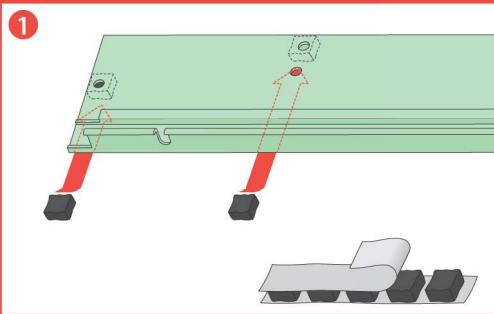
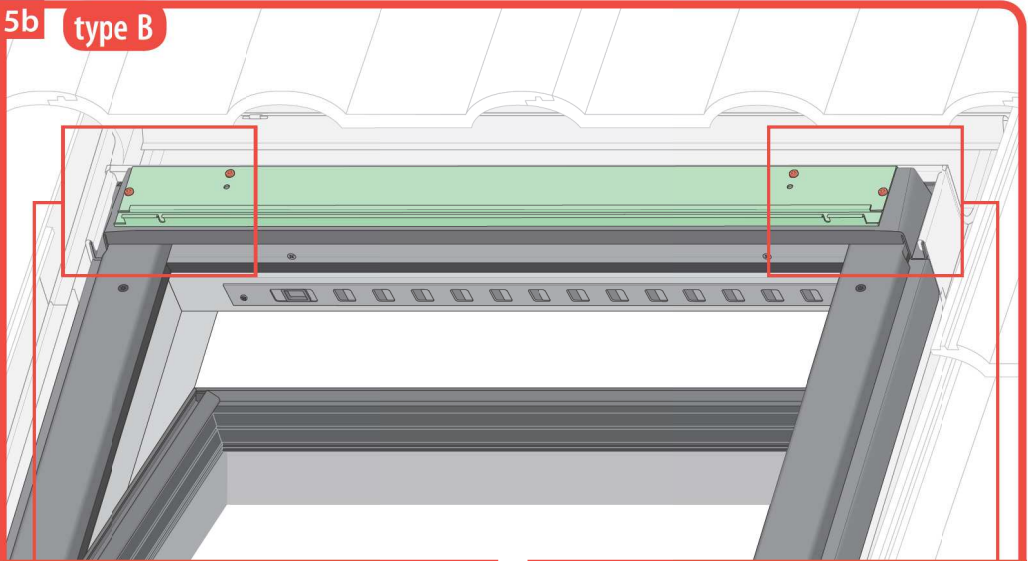
type C



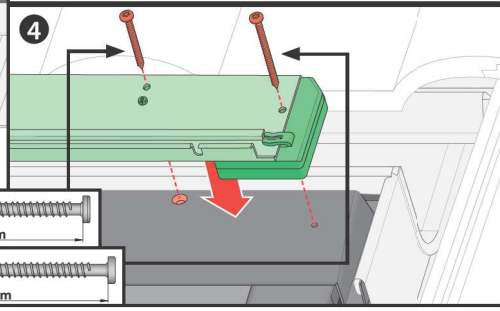
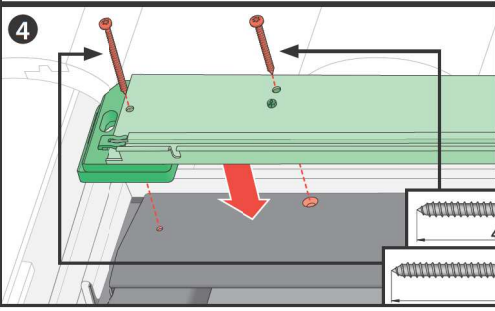
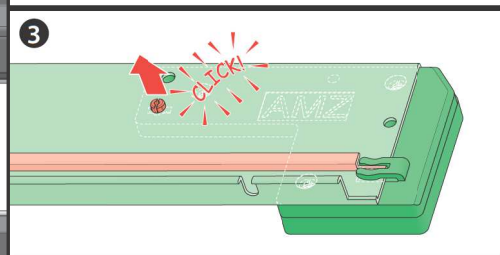
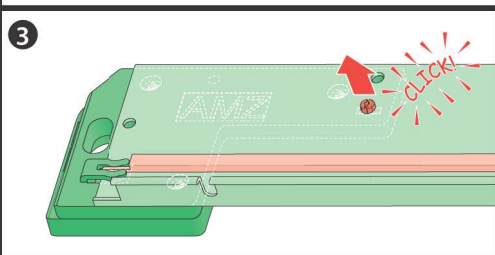
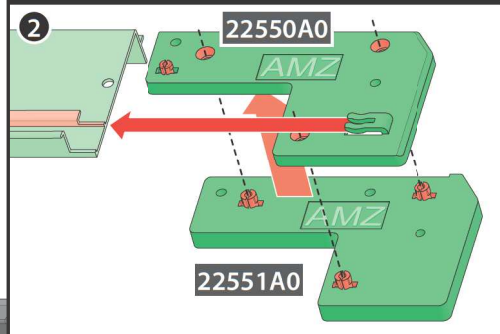
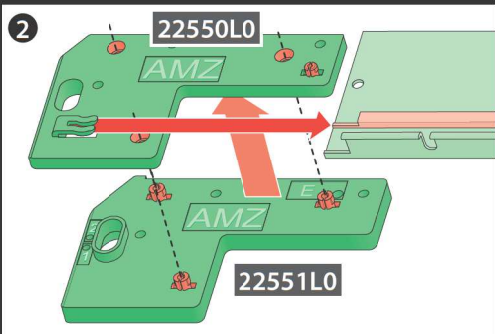
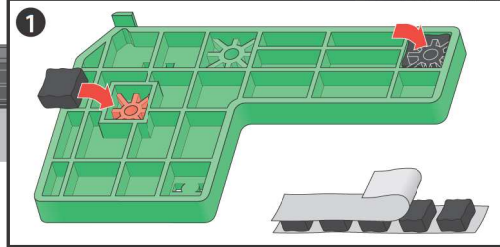
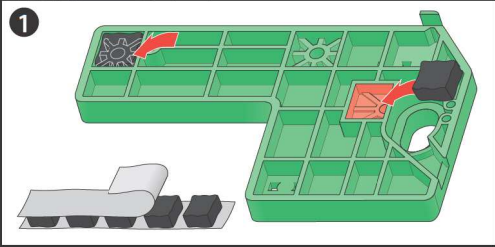
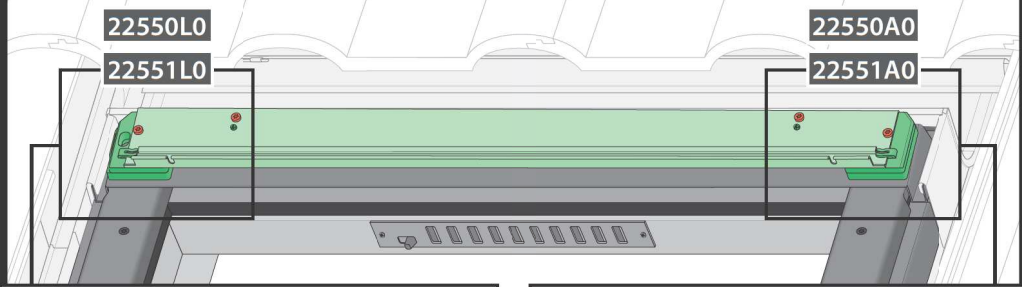
5a type A



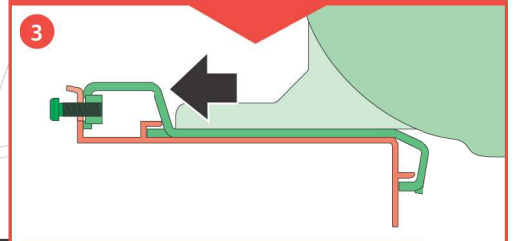
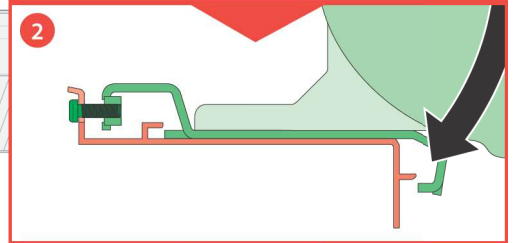
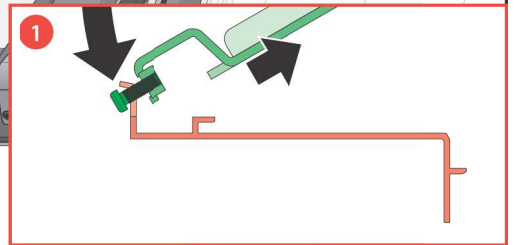
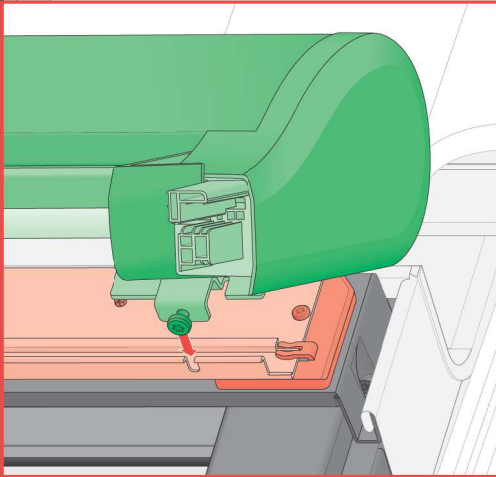
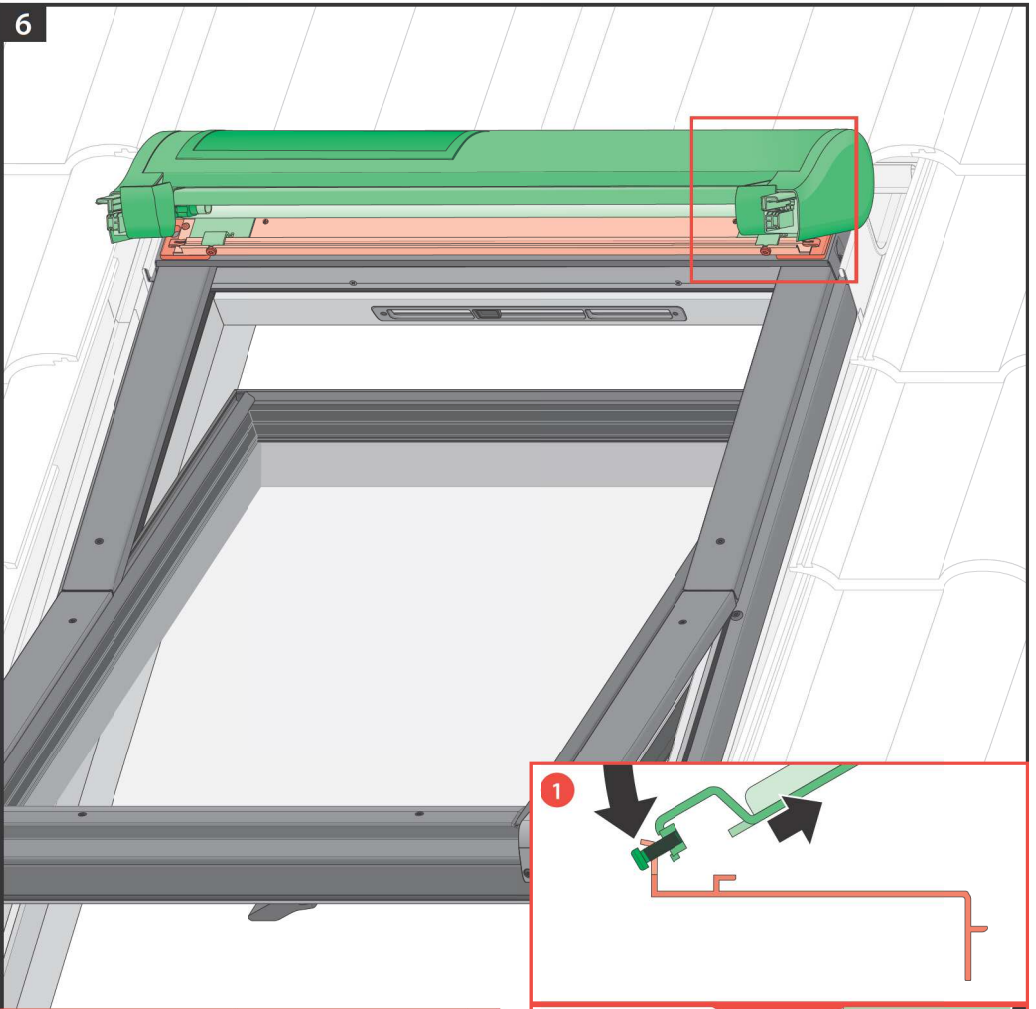
5b type B



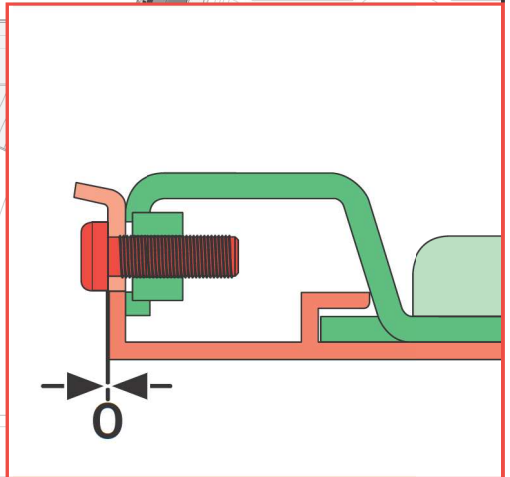
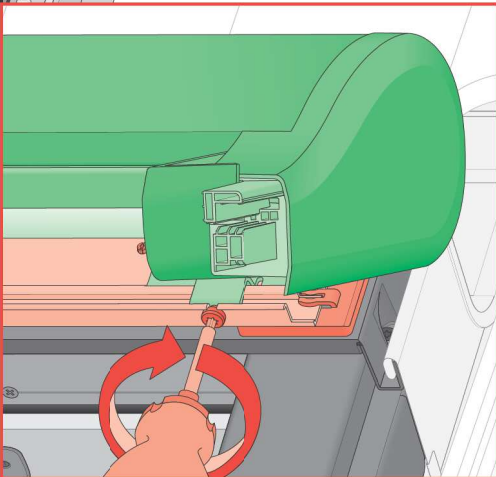
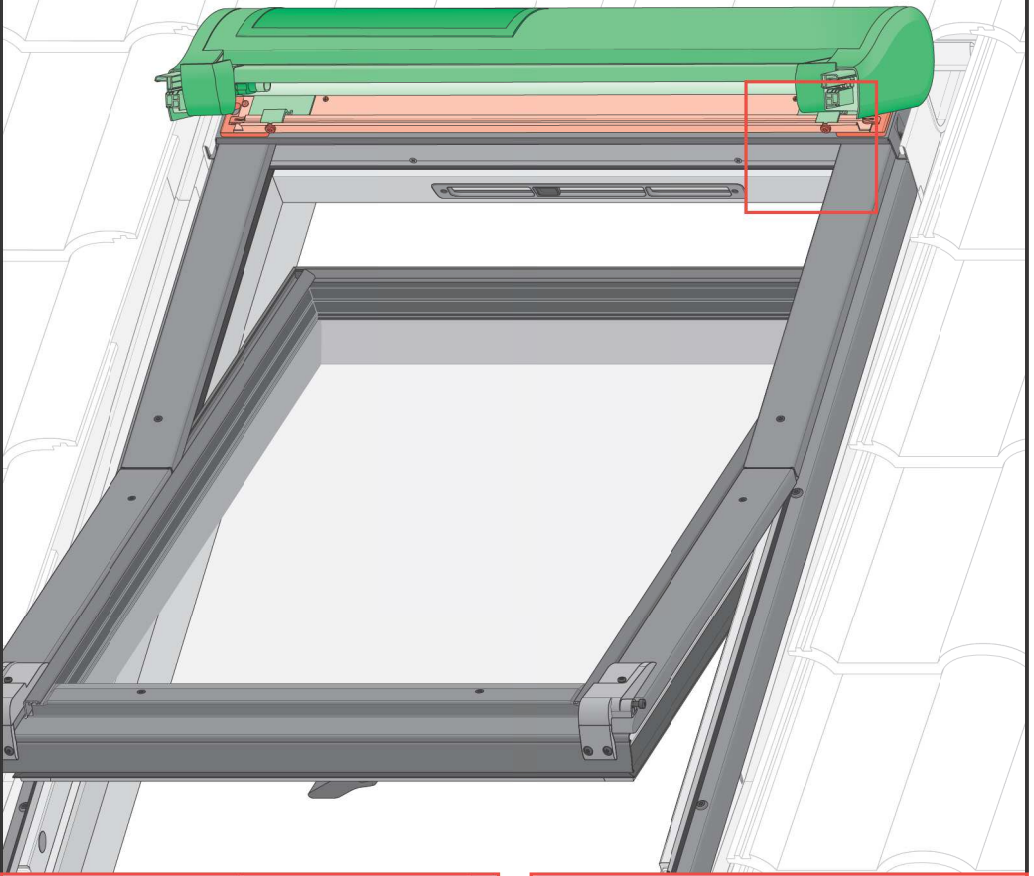
5c type C



6



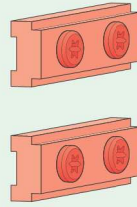
7



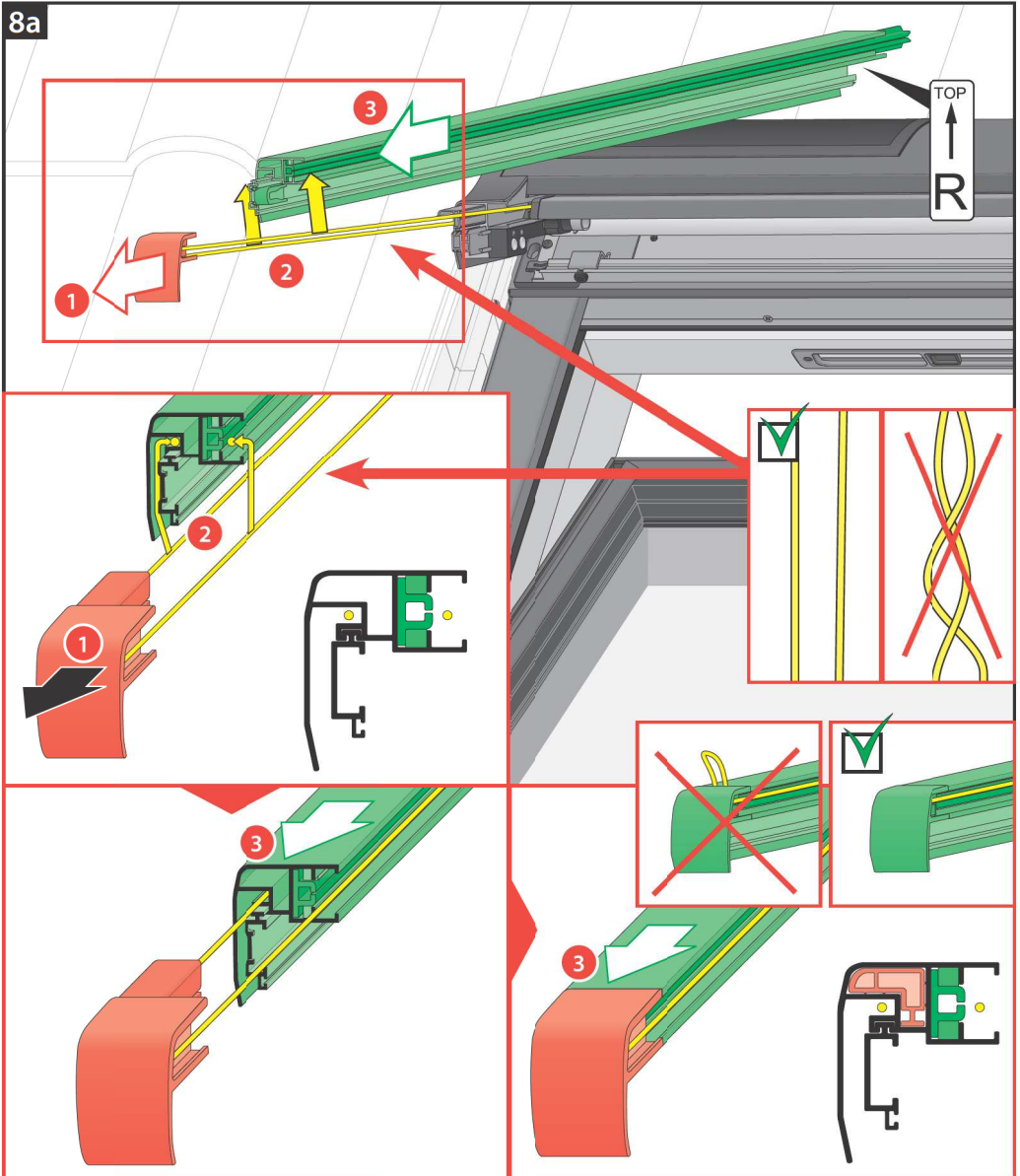
8*



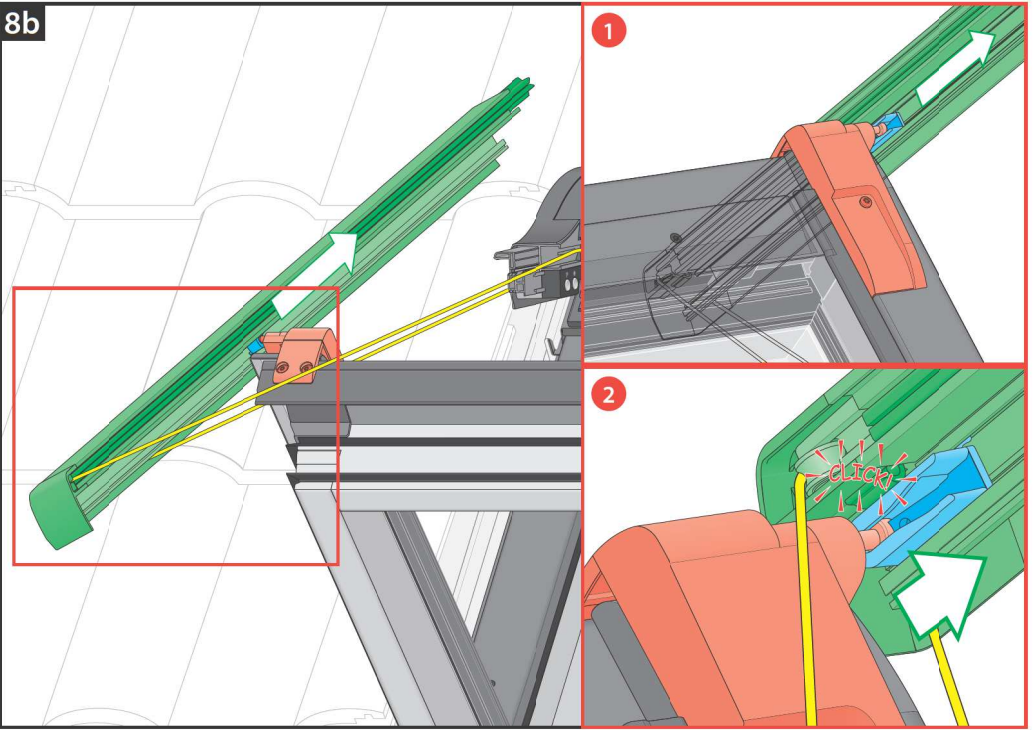
FYP-V
FDY-V
PYP-V



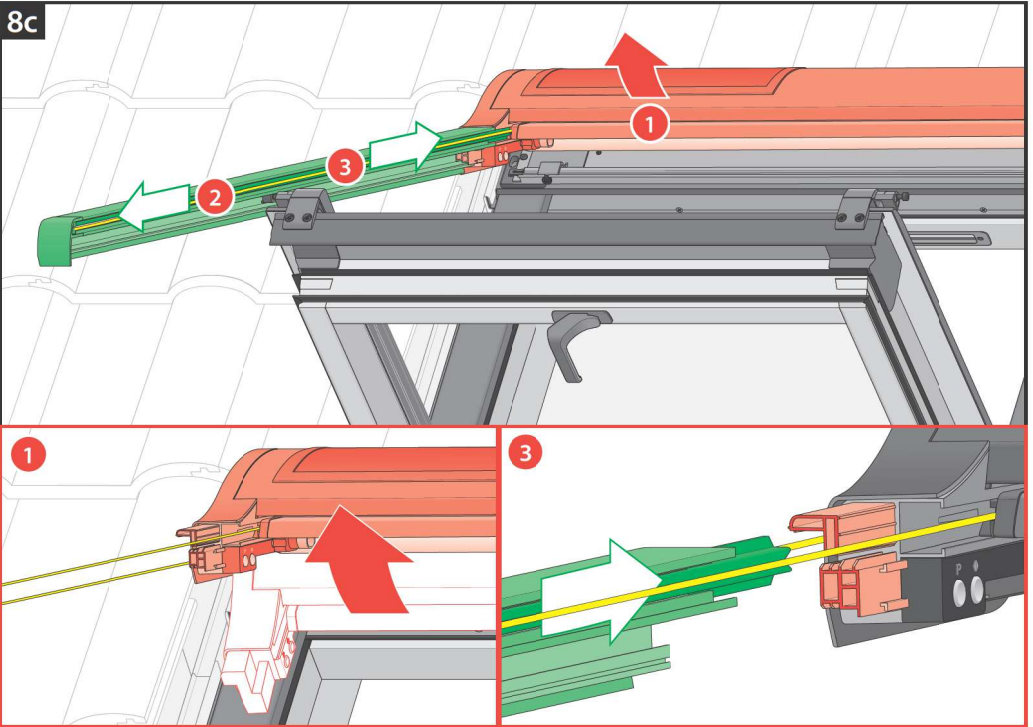
8a

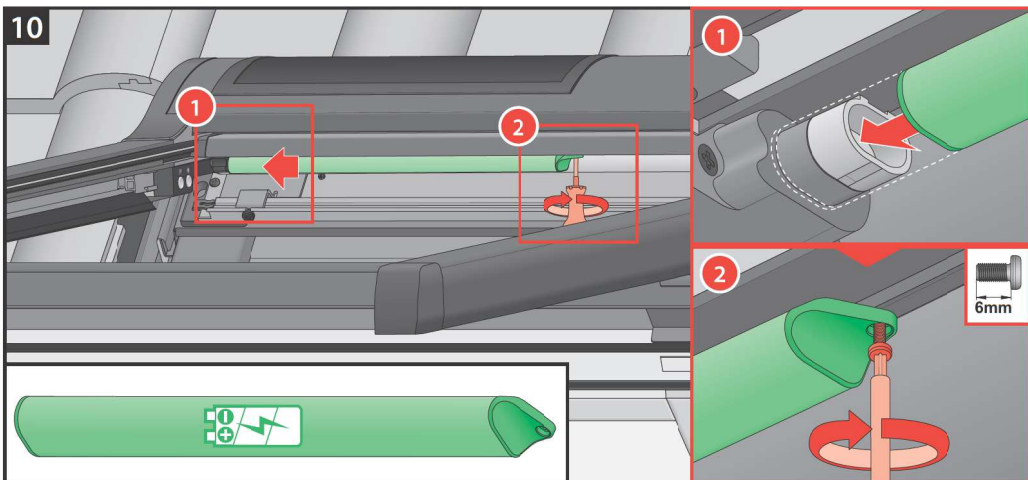
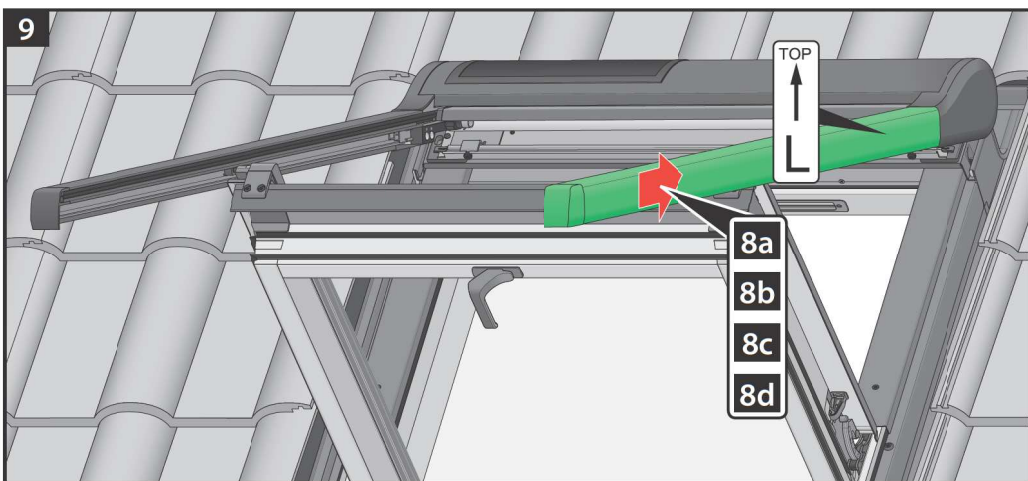
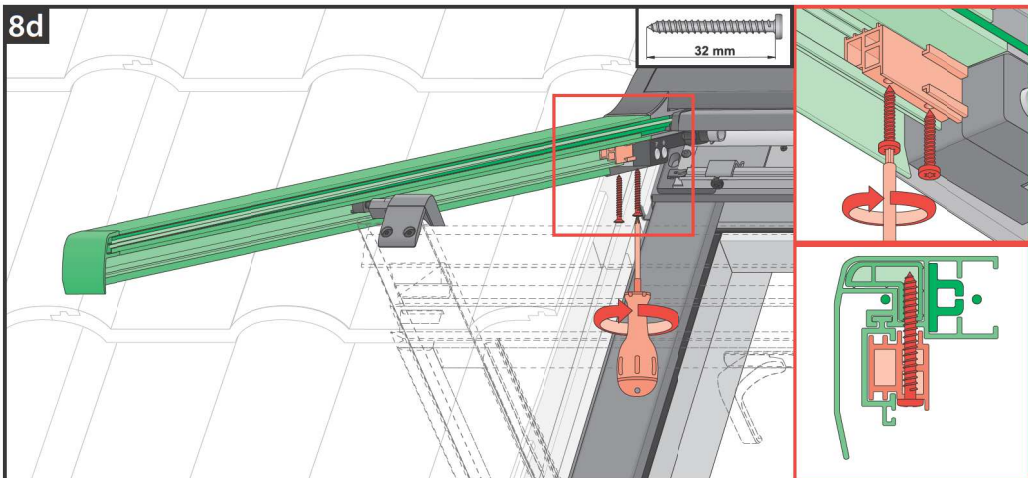


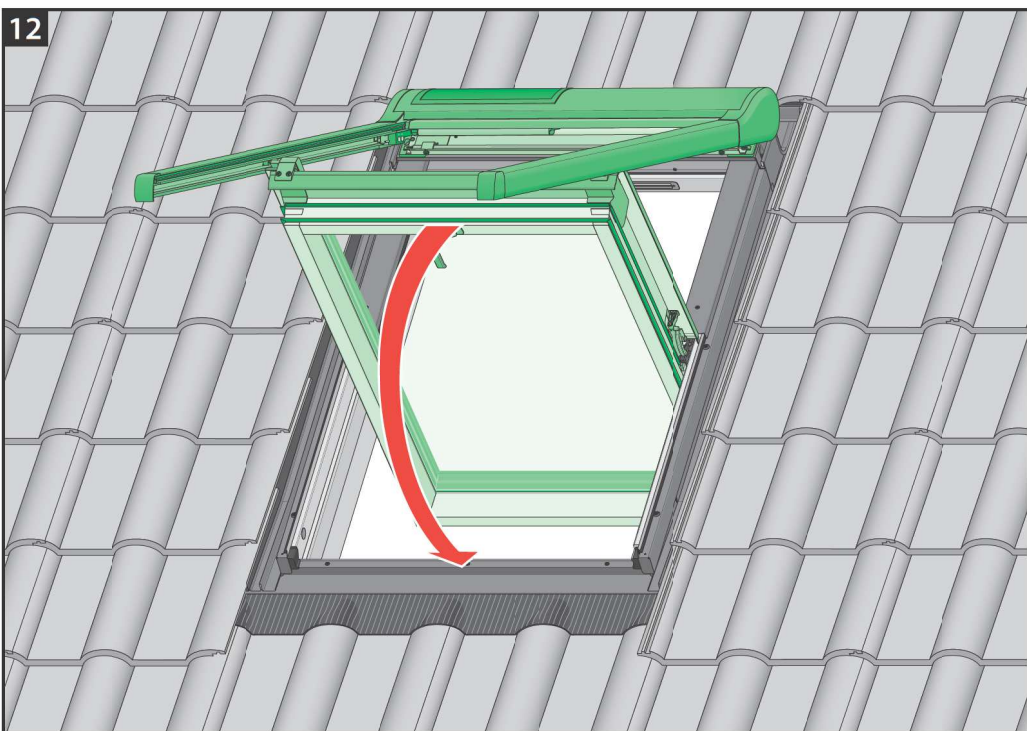
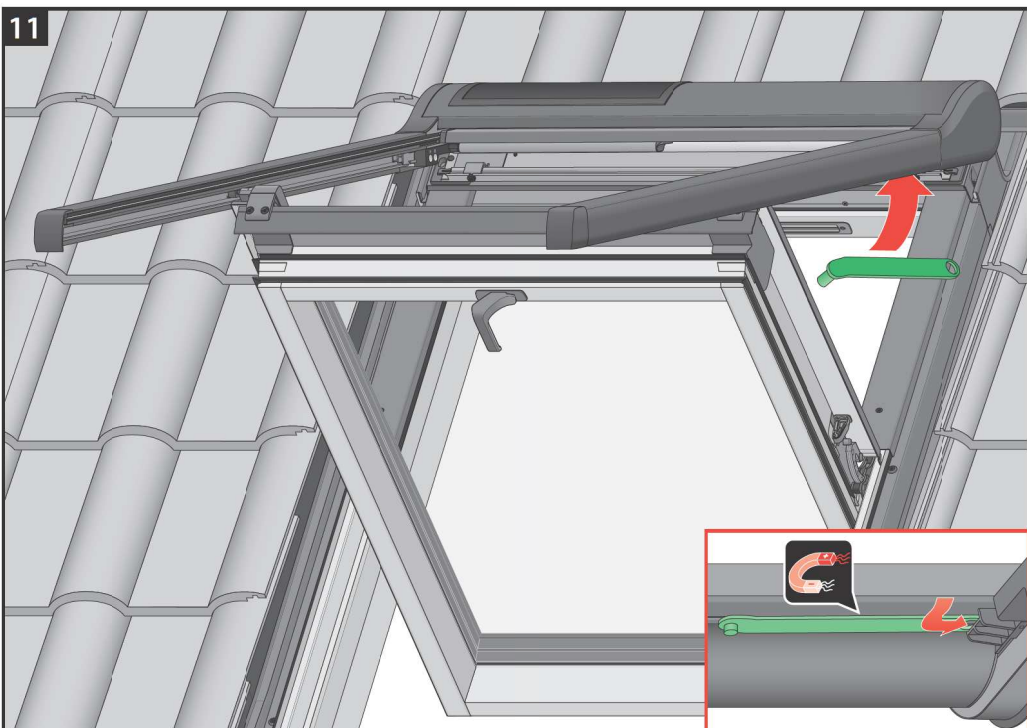
8b



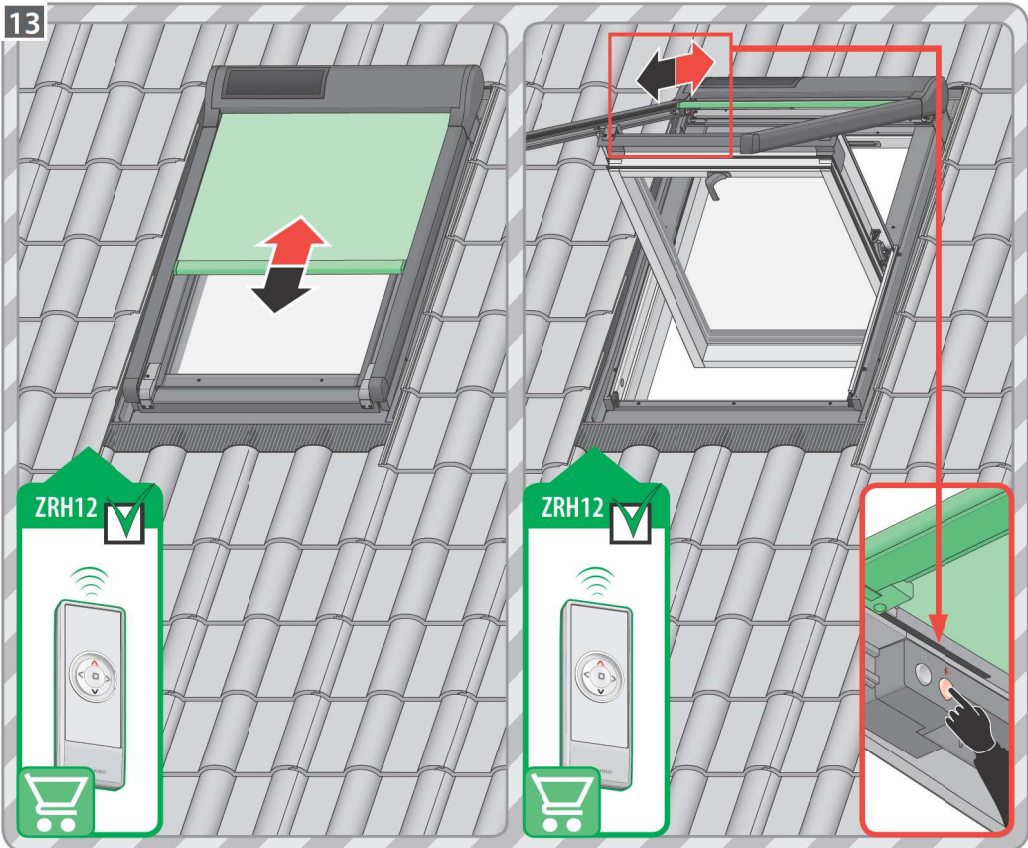
8c



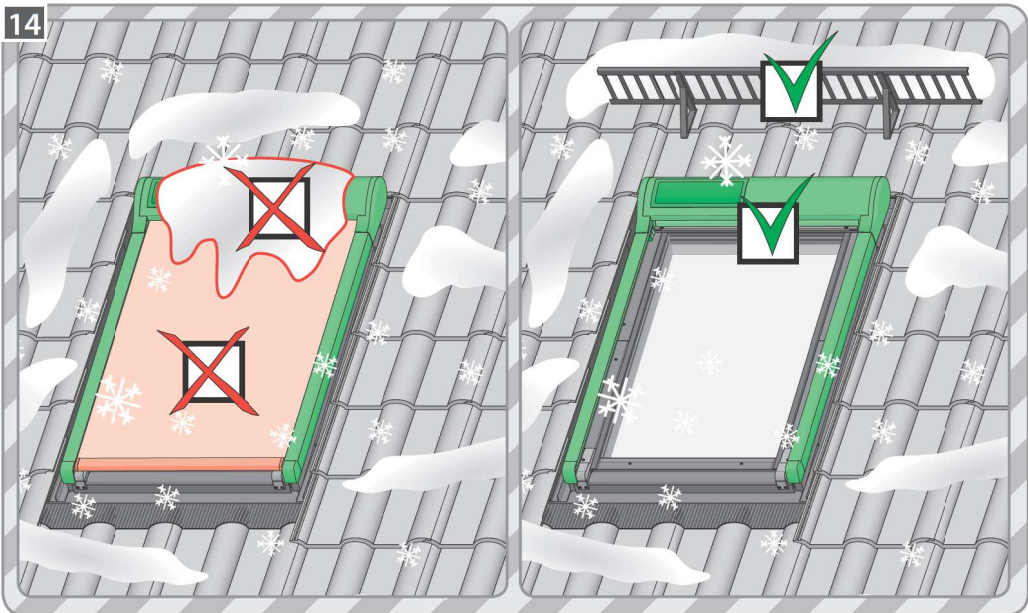




13

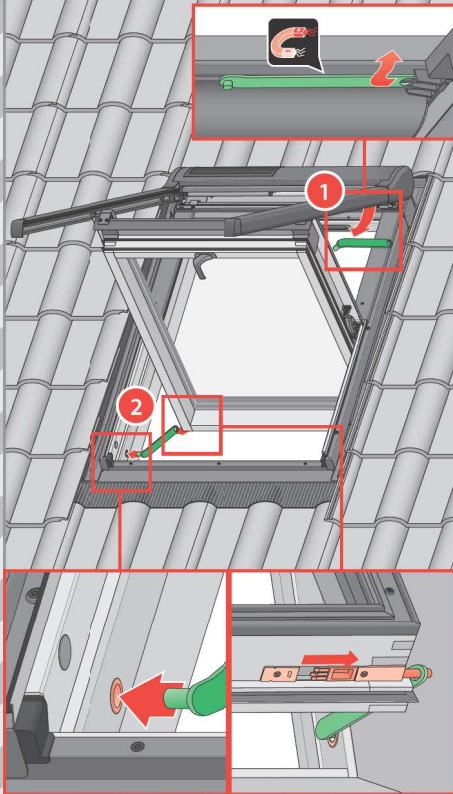


14



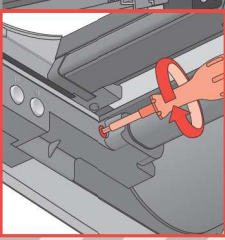
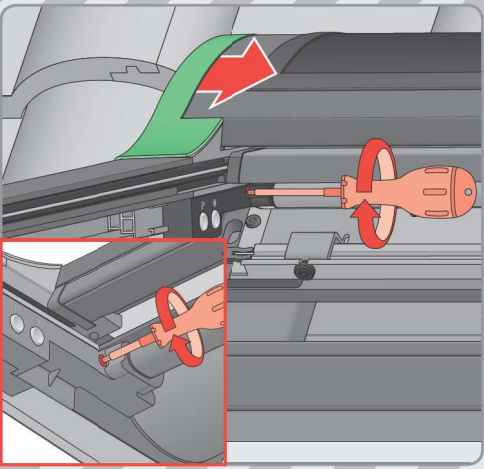
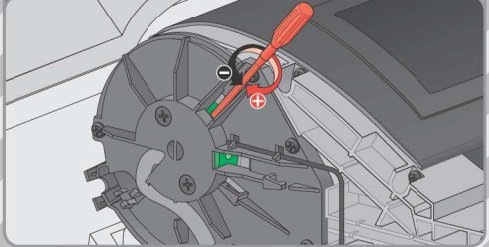
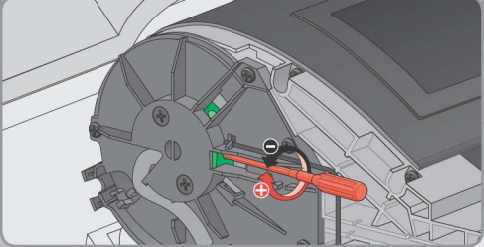
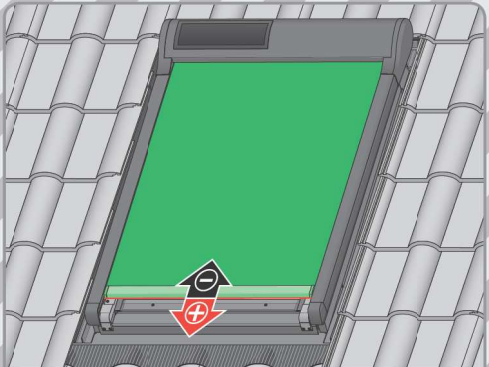
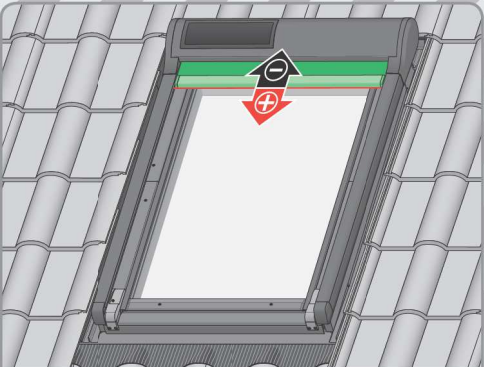
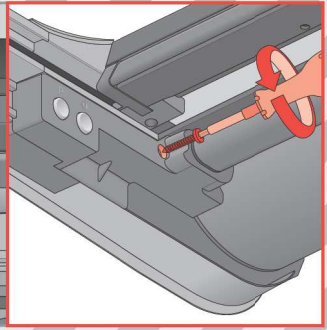
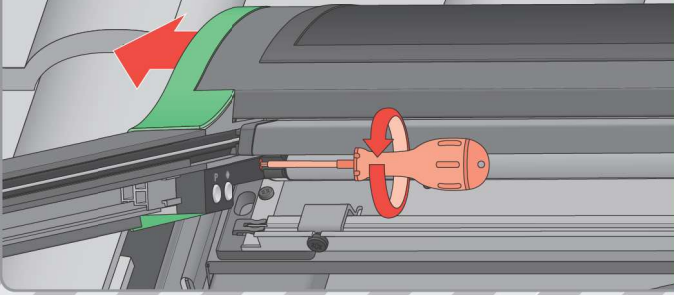
15

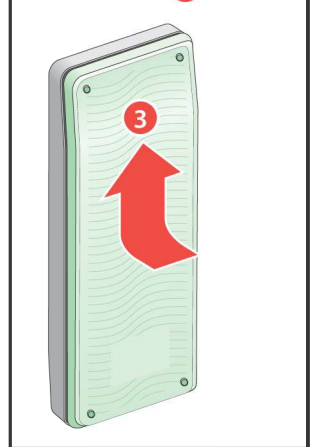
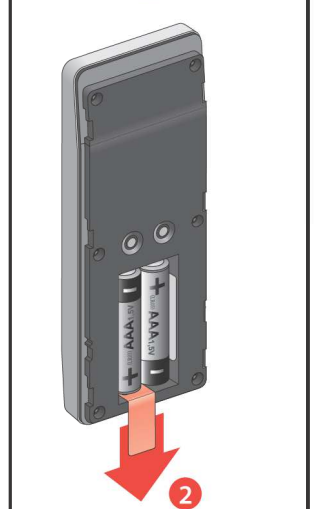
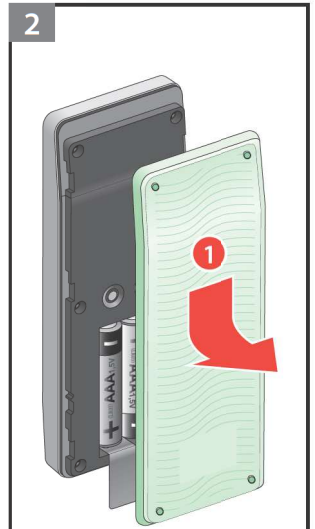
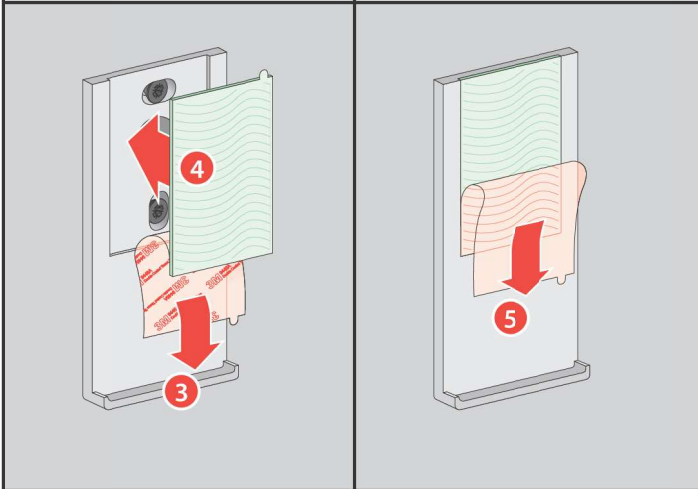
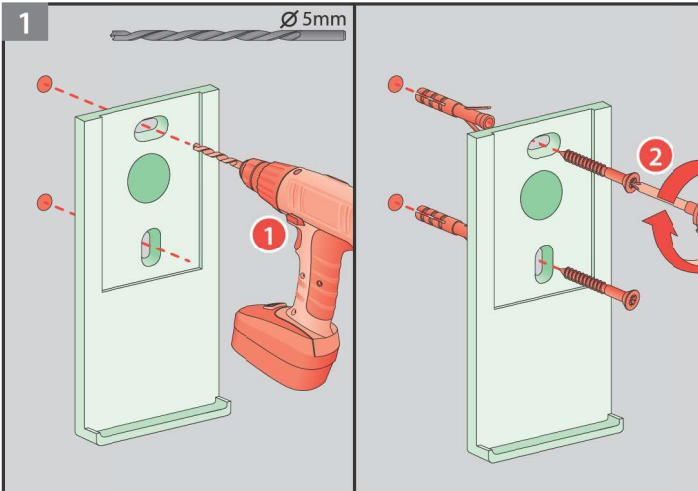
FTP-V, FTU-V, FTW-V, FPP-V, FTS,
FTS-V, FTT, PTP-V, PPP-V, PYP-V, PTP



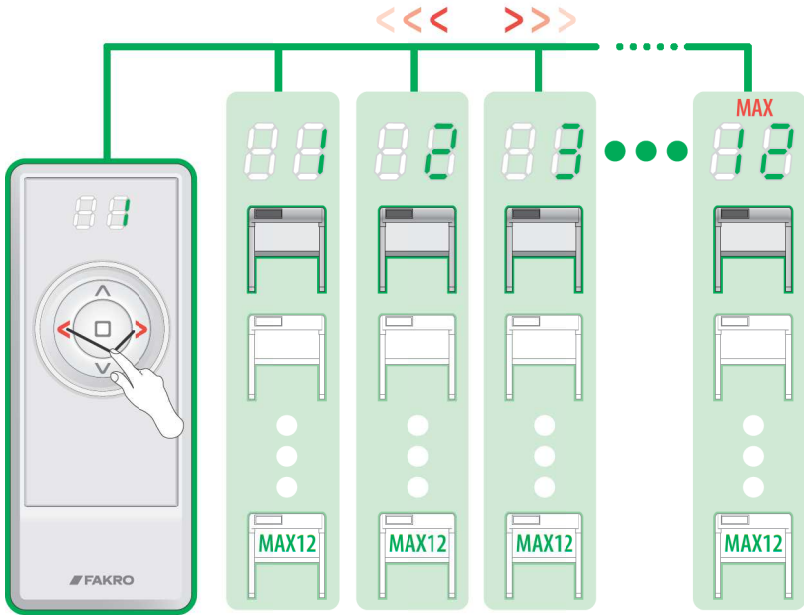
FYP-V, FDY-V, PYP-V



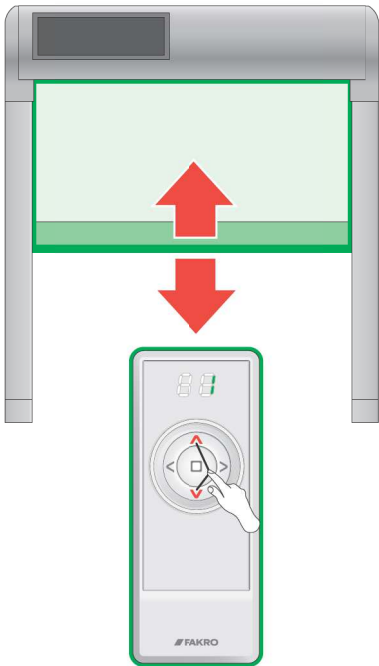




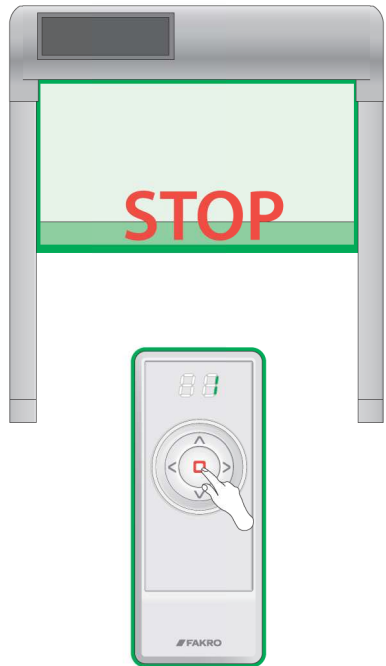
3a



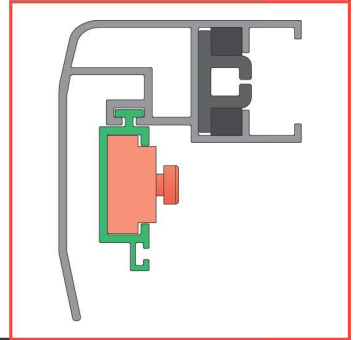
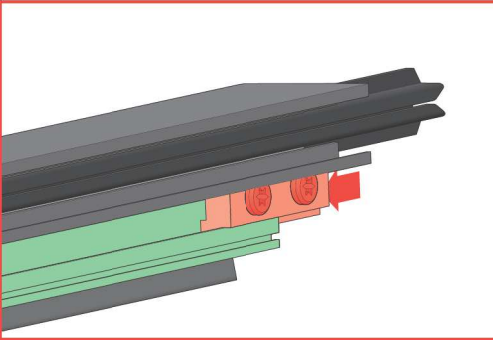
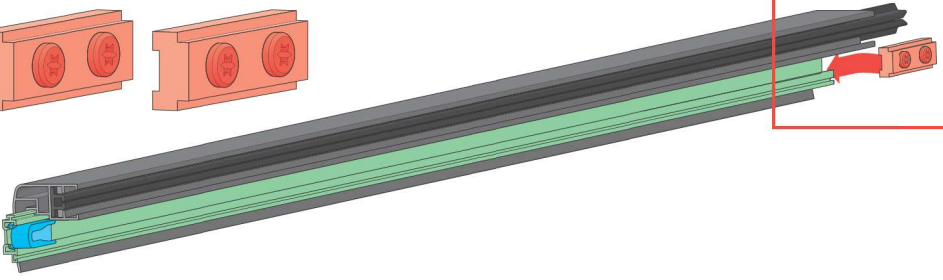
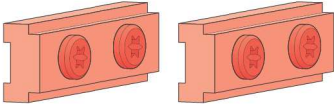
3b



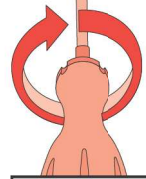
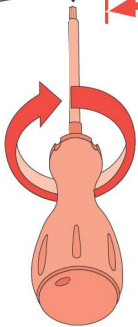
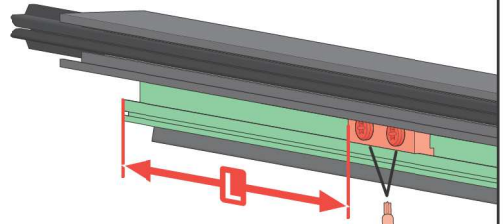
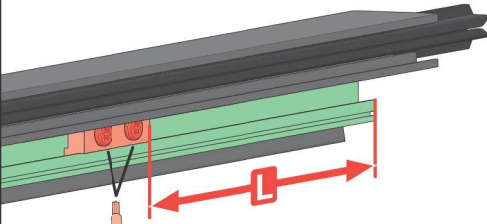
3c

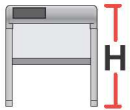


1 FYP-V, FDY-V, PYP-V



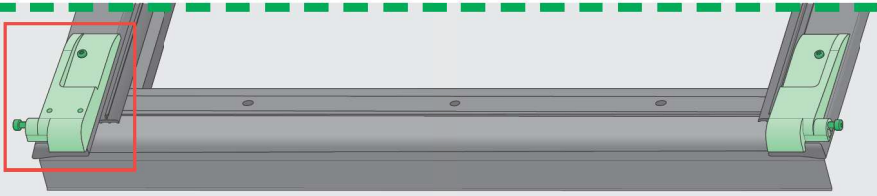
2



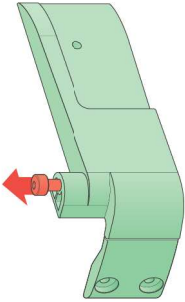
 H	L [mm]
98	295
118	350
140	550
160	550
180	600
206	660



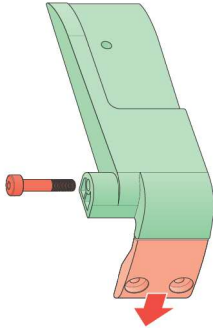
3c



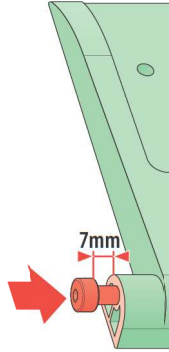
1



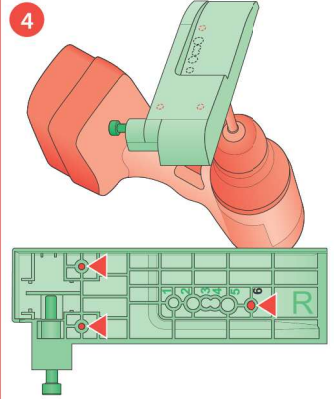
2



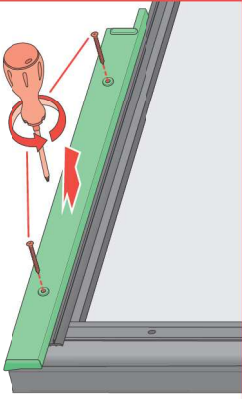
3



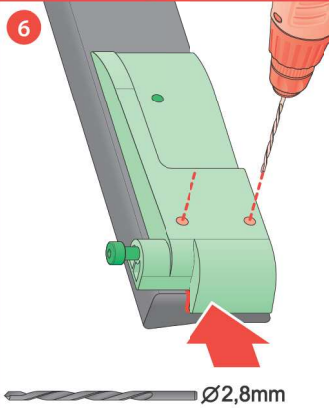
4



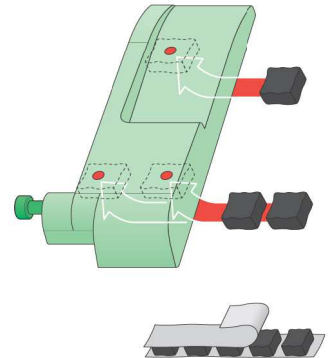
5



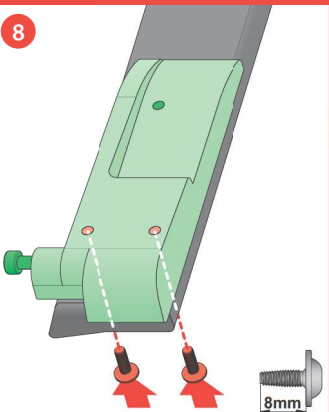
6



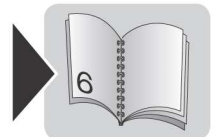
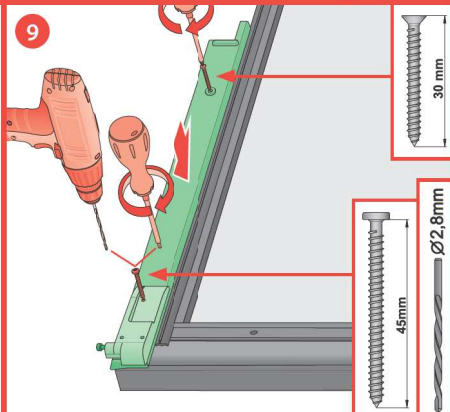
7

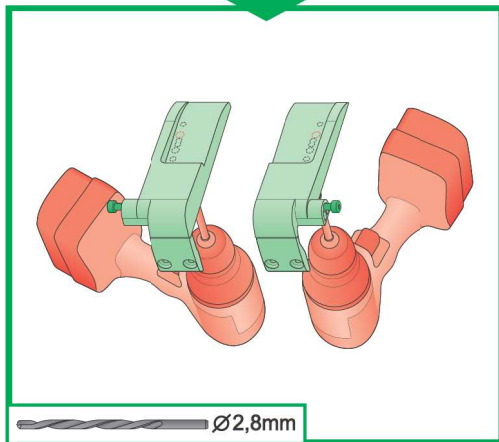
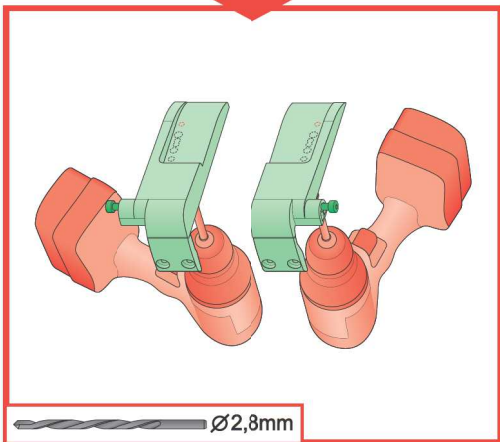
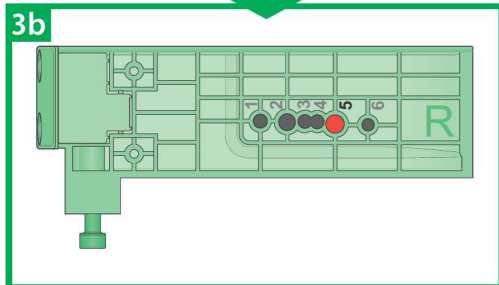
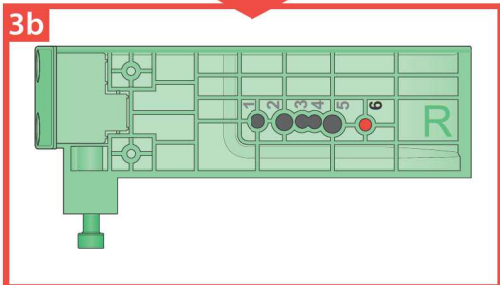
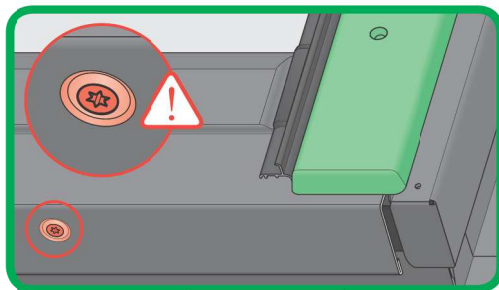
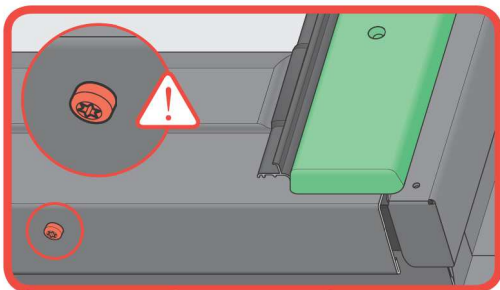
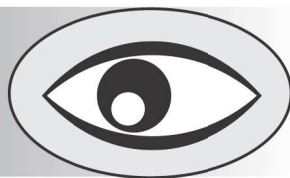


8



9





PL	Przed montażem należy zapoznać się z treścią instrukcji NC9S2 „INSTRUKCJA ORYGINALNA 2/3 Zasady montażu i użytkowania”.
1, 1*	Wyjąć zaczep zabezpieczający znajdujący się pod kasetą.
2	Zablokować skrzydło za pomocą zaczepu.
3a, 3b, 3c, 3d	Wykonać otwór w uchwytych dolnych w miejscu uzależnionym od typu okna a następnie przykręcić je do skrzydła okna.
4, 4a, 4b, 4c	Użyć podkładek montażowych w celu wykonania otworów w kapturze okna. Sposób montażu dobrać w zależności od typu okna.
5, 5a, 5b, 5c	Przykręcić podstawę montażową do kaptura okna za pomocą wkrętów dołączonych do zestawu montażowego. W razie potrzeby użyć dodatkowych podkładek.
6	Umieścić kasetę markizy na podstawie montażowej.
7	Przykręcić uchwyty markizy do podstawy montażowej.
8*	W przypadku montażu na oknach wysokoosiowych wykonać dodatkowe czynności zgodnie z instrukcją.
8a	Wsunąć narożnik do prowadnicy markizy.
8b	Połączyć zaczep prowadnicy z uchwytem dolnym markizy.
8c	Wsunąć prowadnicę boczną w korpus markizy.
8d	Przykręcić prowadnicę do korpusu.
9	Powtórzyć czynności 8a-8d dla prowadnicy lewej.
10	Zamontować baterię pod kasetą markizy.
11	Umieścić zaczep zabezpieczający pod kasetą.
12	Zamknąć okno po zakończonym montażu.
13	Sterować markizą za pomocą przycisku na sterowniku lub pilota.
14	Nie dopuszczają do nagromadzenia śniegu na markizie, w tym celu zaleca się stosowanie urządzeń zapobiegających zsuwaniu się śniegu na markizę.
15	Do zabezpieczenia okna w pozycji „do mycia” używać zaczepu zabezpieczającego.
16	W razie potrzeby przeprowadzić regulację pozycji krańcowych markizy.

EN	Before installation, it is compulsory to read the NC9S2 „ORIGINAL INSTRUCTIONS 2/3 Installation and user manual”.
1, 1*	Remove the safety catch under the cassette.
2	Lock the sash with the catch.
3a, 3b, 3c, 3d	Drill a hole in the bottom holders in the place depending on the window type and then screw them to the window sash.
4, 4a, 4b, 4c	Use mounting washers to drill holes in the window hood. Choose installation method depending on the window type.
5, 5a, 5b, 5c	Screw the mounting base to the window hood using the screws included in the mounting kit. If required, use additional washers.
6	Place the awning cassette on the mounting base.
7	Screw the awning holders to the mounting base.
8*	For installation on high-axis windows, perform additional steps according to the instructions.
8a	Slide the corner into the awning guide rail.
8b	Connect the guide rail catch with the awning bottom holder.
8c	Slide the side guide rail into the awning casing.
8d	Screw the guide rail to the casing.
9	Repeat steps 8a-8d for the left guide rail.
10	Install the battery under the awning cassette.
11	Place the safety catch under the cassette.
12	Close the window after completed installation process.
13	Operate the awning using the button on the controller or remote control.
14	Do not allow accumulation of snow on the awning. For this purpose it is recommended to use devices preventing snow from sliding onto the awning.
15	Use the safety catch to secure the window in the position for cleaning.
16	If required, adjust the end positions of the awning.



BG	Производител и Продавач не носят отговорност за неспазване на съответните закони, строителни норми и изисквания за безопасност от притоци вене на продукта, допринасят, монтажника или собственика на стаята.
CZ	Urobae ani prodejce nenesou zodpovednost za nedodrženi právních předpisů a bezpečnostních požadavků úřadůve výrobu, architekt, montážnik nebo vlastník budovy.
DE	Hersteller und Verkäufer übernehmen keine Haftung für Nichtbeachtung entsprechender Rechts- und Bauvorschriften sowie Sicherheitsanforderungen seines Produktbenutzers, Architekten, Monteurs oder Gebäudebesitzer.
EE	Tootja ja müüja ei vastuta toote kasutamise, arhitekti, paigaldaja või hoone omaniku poolt kehtivate seaduste, määruste ja ohutusnõuete mittejärgmise eest.
ES	El fabricante y el vendedor no tienen ninguna responsabilidad por el incumplimiento de la ley vigente, normas de construcción y exigencias de seguridad por parte del usuario del producto, arquitecto, instalador o el propietario del edificio.
FR	Le fabricant et le vendeur ne prend aucune responsabilité en ne pas respecter les lois applicables, les règlements sur les bâtiments et les exigences de sécurité et / ou relatives au produit, l'architecte, l'installateur ou le propriétaire du bâtiment.
GB	Manufacturer and Seller shall bear no liability for failure to comply with the applicable laws, building codes and safety requirements by the user of the product, architect, fitter or owner of the building.
HU	A gyártó és a forgalmazó nem vállal semmiféle felelősséget a vonatkozó törvényi, építési és biztonsági előírások nemtörődömségével, beszállás, beszállásról vagy építési előírásokkal szembeni elmulasztással.
IT	Il Produttore e il Rivenditore non potranno essere ritenuti responsabili per il mancato rispetto, da parte dell'utente del prodotto, di progettata, dell'installatore o del proprietario dell'edificio, delle leggi vigenti, dei norme dei regolamenti edilizi e di quelli relativi alla sicurezza.

LT	Rabotojas ir pardavėjas neužima atsakomybę už nesilaikymą taikytiniais įstatymais, statybos normomis ir reikalavimais produkto saugumui, architektui, montuotojui ar pastato savininkui.
LV	Samērītājs ir pārdevējs neapņemas atbildību par likumu, noteikumu un drošības prasību neievērošanu no produkta lietotāja, arhitekta, uzstādītāja vai ēkas īpašnieka puses.
PL	Samontażujący i sprzedawca nie ponosi żadnej odpowiedzialności za niezapewnienie stosownych przepisów prawa, przepisów budowlanych i wymogów bezpieczeństwa przez użytkownika produktu, architekta, montażystę lub właściciela budynku.
NL	De fabrikant en verkoper zijn niet aansprakelijk voor gevolgen bij het niet opvolgen van toepasselijke wetten, bouwbesluiten en veiligheidsvoorschriften door de gebruiker van het product, de architect, de installateur of de eigenaar van het gebouw.
PT	O fabricante e o vendedor não têm nenhuma responsabilidade pelo o não cumprimento da lei, códigos de construção e as exigências de segurança por parte do usuário do produto, arquiteto, instalador ou proprietário do edifício.
RO	Nici producătorul, nici distribuitorul nu își vor asuma răspundere pentru nerespectarea legilor în vigoare, a legilor din domeniul construcțiilor sau a măsurilor de siguranță impuse utilizatorilor produsului, arhitecților, montajistilor sau proprietarilor clădirii.
RU	В случае несоблюдения архитектором, монтажником или владельцем здания строительных правил и норм безопасности ответственность с производителя и продавца снимается.
SK	Výroba a predaja nenesú žiadnu zodpovednosť za nedodržanie príslušných ustanovení zákona, stavebných predpisov a bezpečnostných požiadaviek úradov vo výrobu, architekt, montážnik alebo majiteľom objektu.